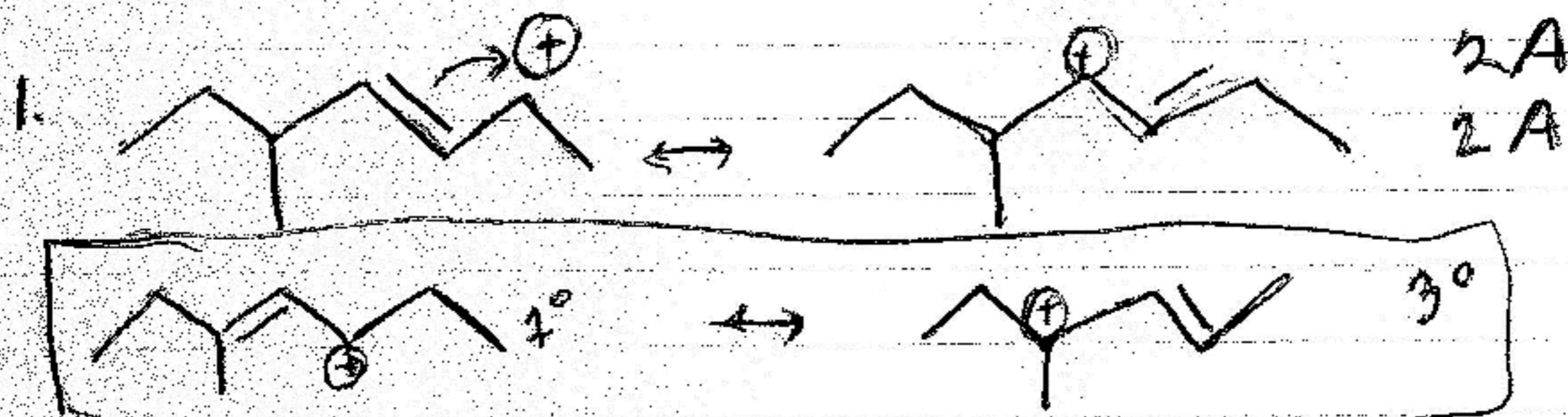
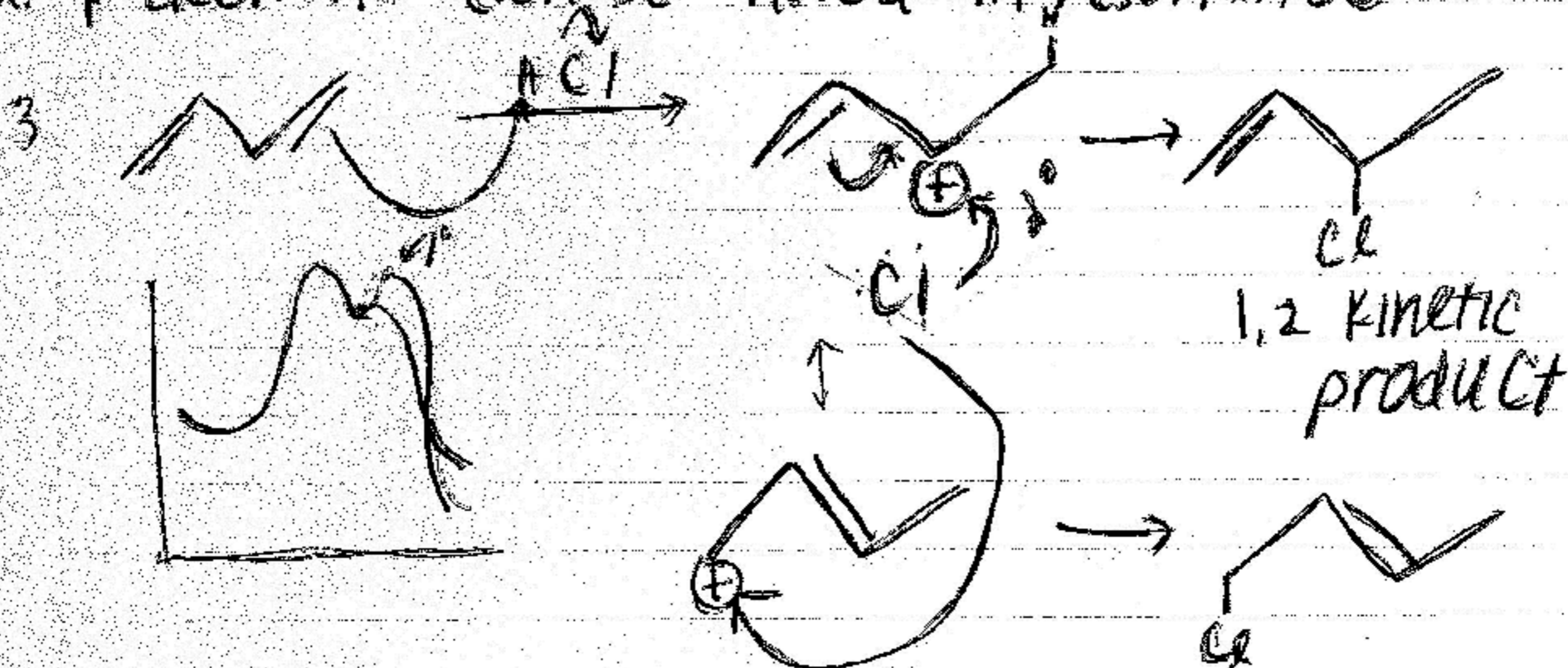


CHM 201 Colonna Test #3 Fall 2008

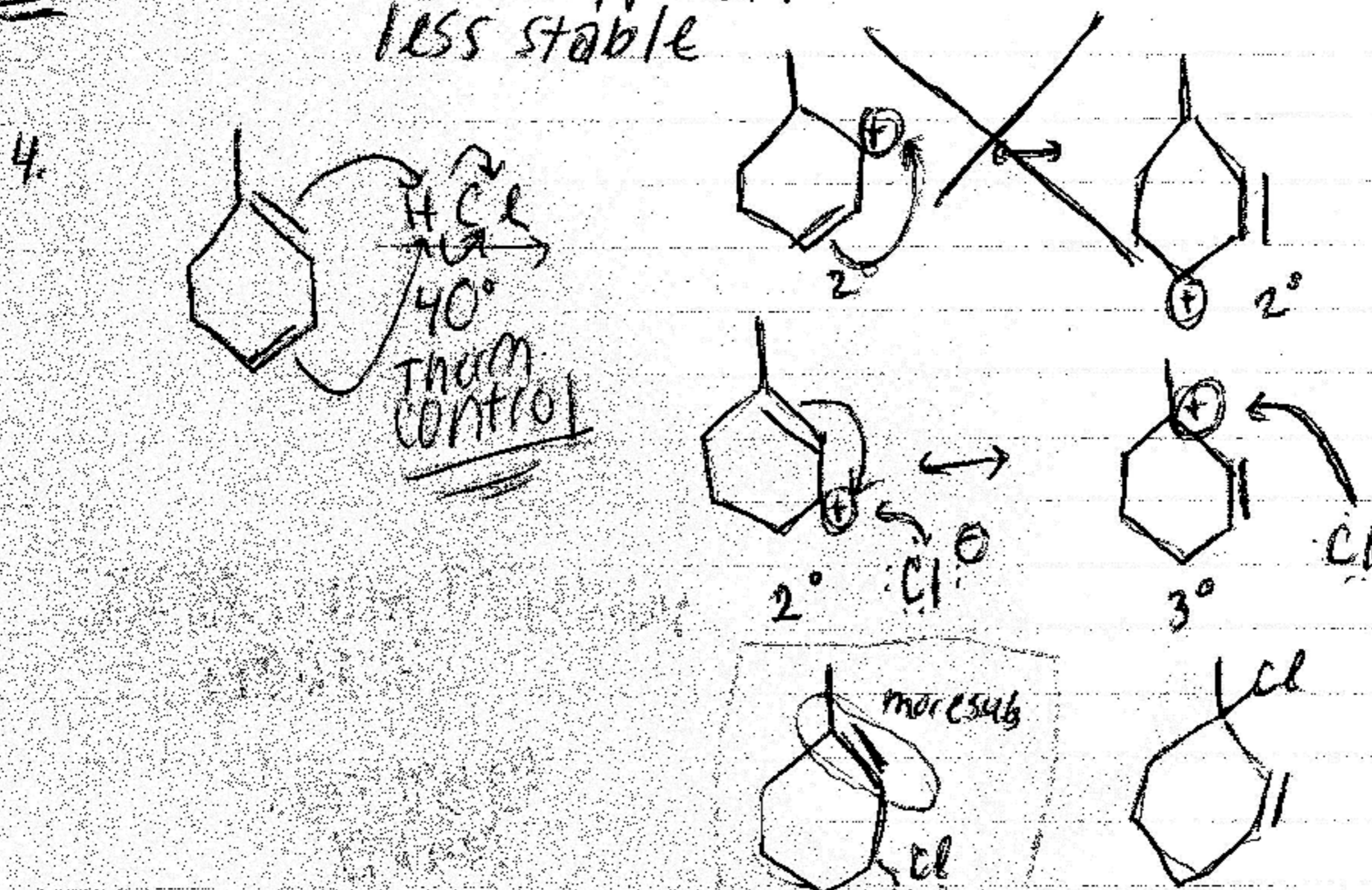
Test 3 Colonna



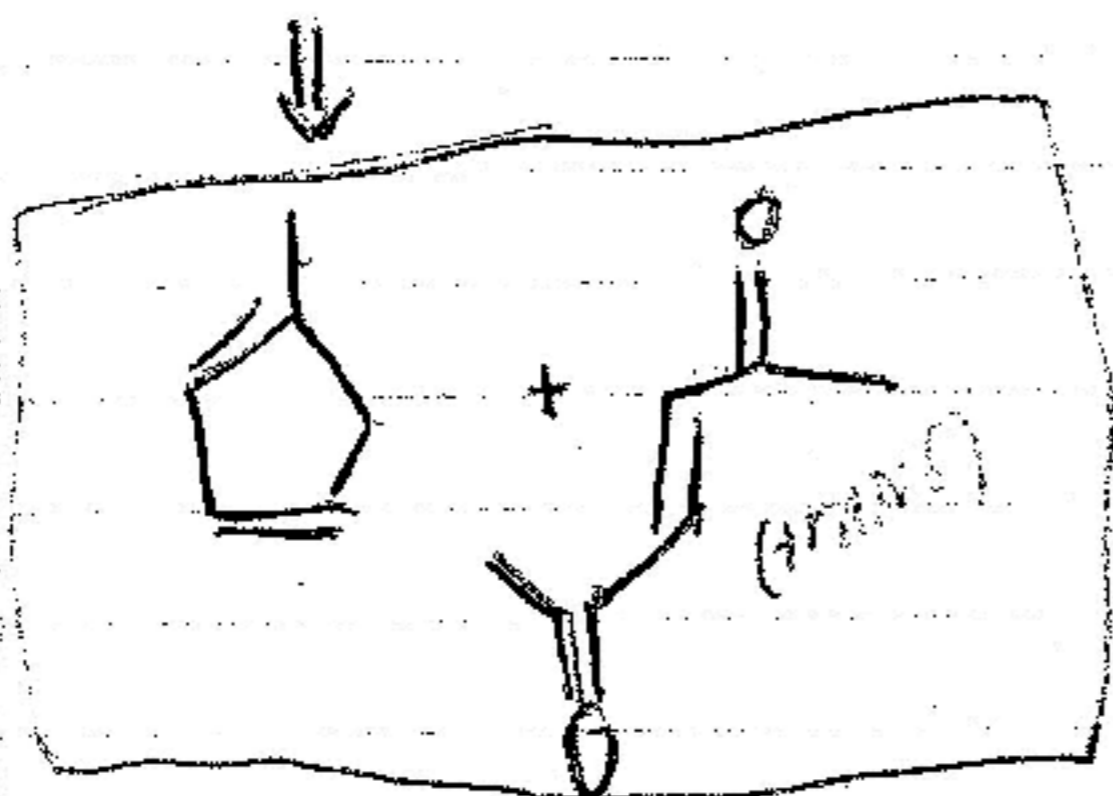
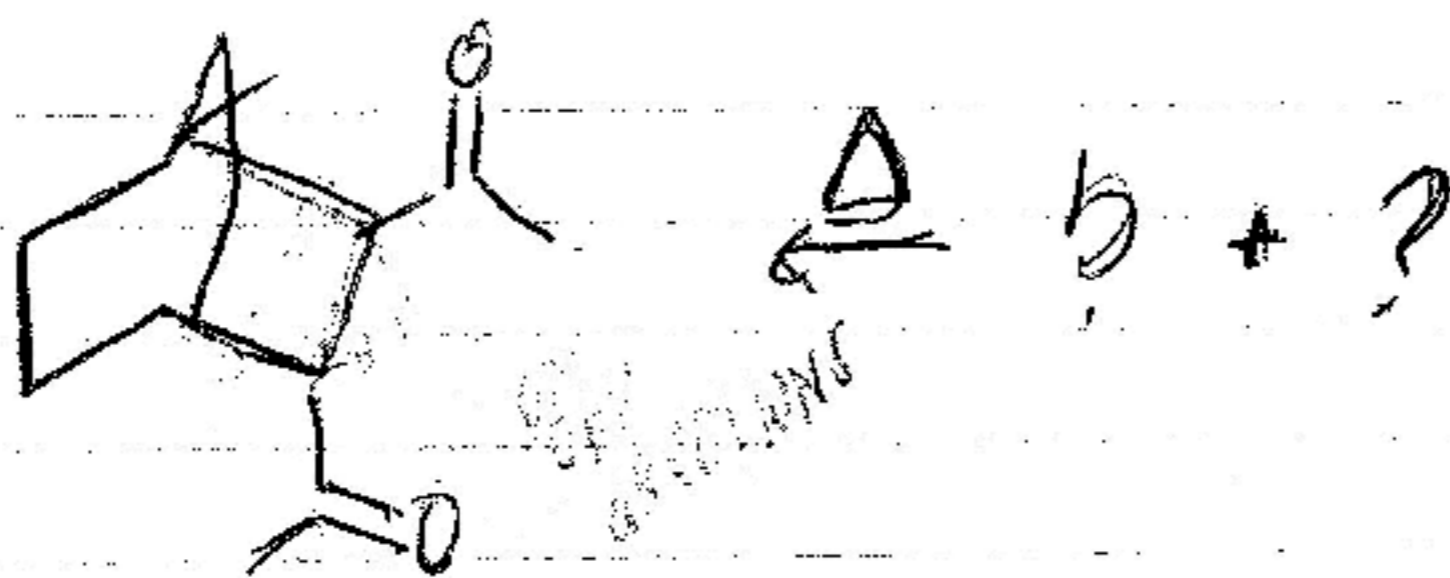
2. p electrons can be moved in resonance



more int. more stable, product
less stable



5.



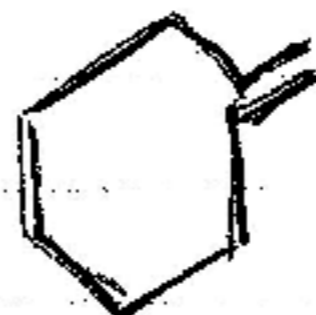
6. which diene suitable for diels alder?



5-DIS



NO



NO



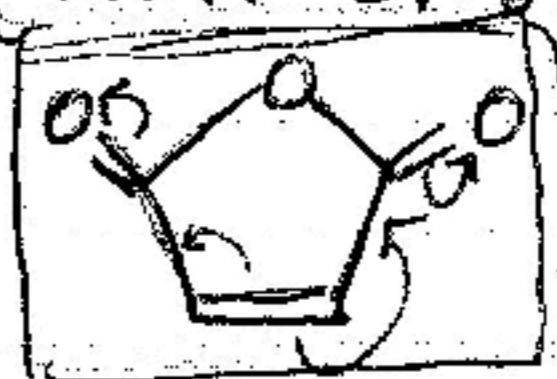
YES



7. dienophiles for diels alder? (want EWG attached)



good



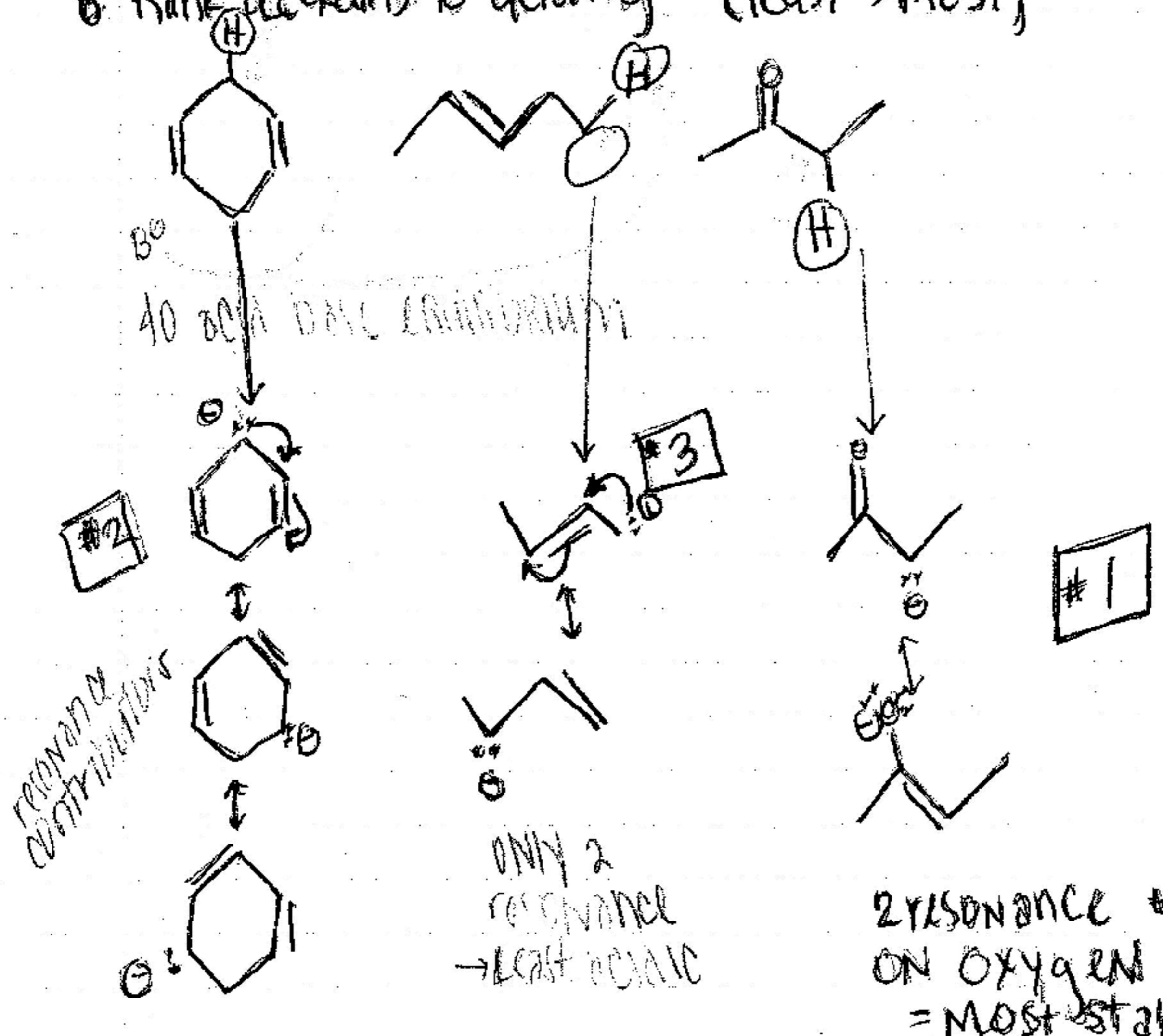
Really good!



worst (electron donating)

Look at inductive effect & resonance (more important)

8. Rank according to acidity (least → most)



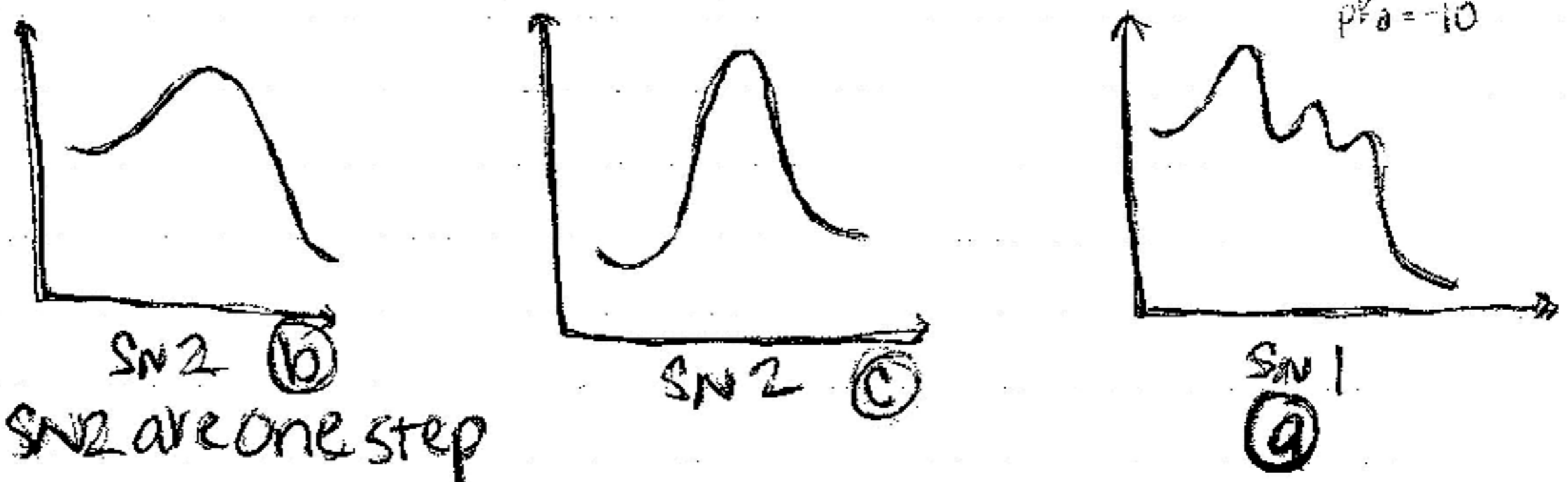
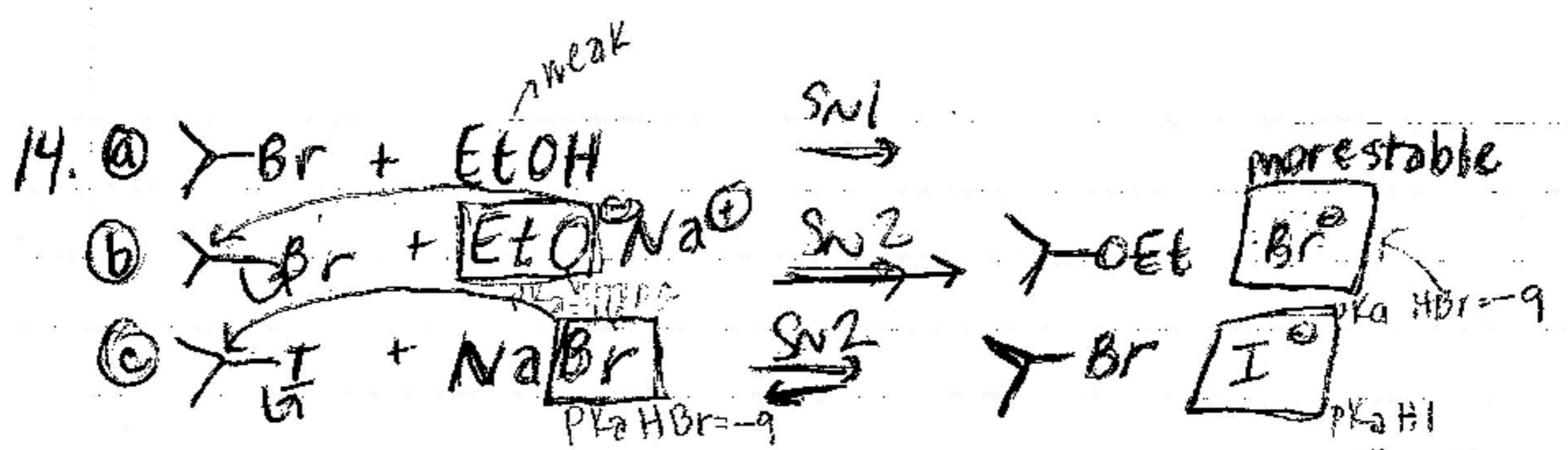
3 resonance contrib.
2° allylic C-ions

ONLY 2 resonance
→ LEAST ACIDIC

2 RESONANCE + NEG ON OXYGEN
= MOST STABLE

more acidic = more stabilization

all 2°



SN2 are one step

b is exergonic

ANSWER = **A**

15. which chloride most reactive when treated by methylamine in acetone?

